

NEXT
ATLANTA

concept statement



The design for the NEXT satellite office in Atlanta utilizes **biophilic design** principles to help inspire occupant's work. Specializing in health, wellness, and improving happiness for the people who use their apps and software, this space for NEXT employees will encourage them to **practice what they create** by improving indoor air quality and improving their productivity and cognitive performance through the presence of plants and biophilic elements. The plants selected for the space not only clean and purify the air, but are also adaptive plants to Georgia and sit inside a topographic map of the state which surrounds the stair and enforces a **connection to nature** to all interior spaces.





patterns of biophilic design :

(Downton et. al., 2017)

nature in the space	
visual connection to nature	presence of water
non visual connection to nature	dynamic + diffuse light
non-rhythmic sensory stimuli	connection with natural systems
thermal + airflow variability	

nature of the space	
prospect	risk / peril
refuge	
mystery	

natural analogues
biomorphic forms + patterns
material connection with nature
complexity + order

biophilia + occupant health :

(Birrel & Gray, 2014)

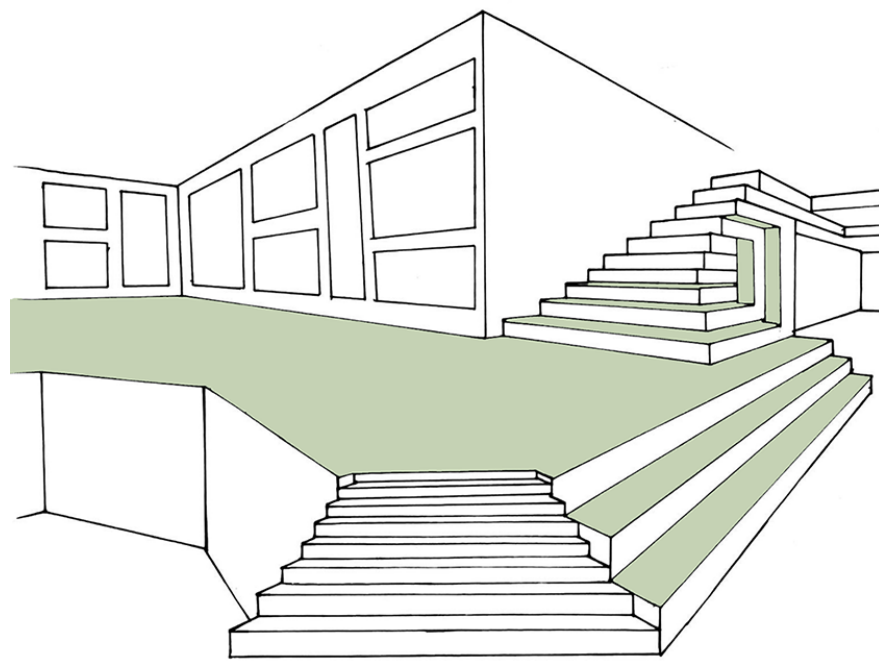
1. "Biophilic design incorporates considerations of human health, ecology, and sustainability principles."
2. "Presence of plants correlates positively with worker productivity."
3. "Cleaner air has been found to have a casual relationship with better cardiovascular health + mental activity."
4. "Benefits of human-nature contact include stress reduction, healing + attention restoration, development of perceptive + expressive skills."
5. "Plants play a role in the ameliorating of volatile organic compounds (VOCs) from plastic + synthetic materials."

process work

stair oriented layout :

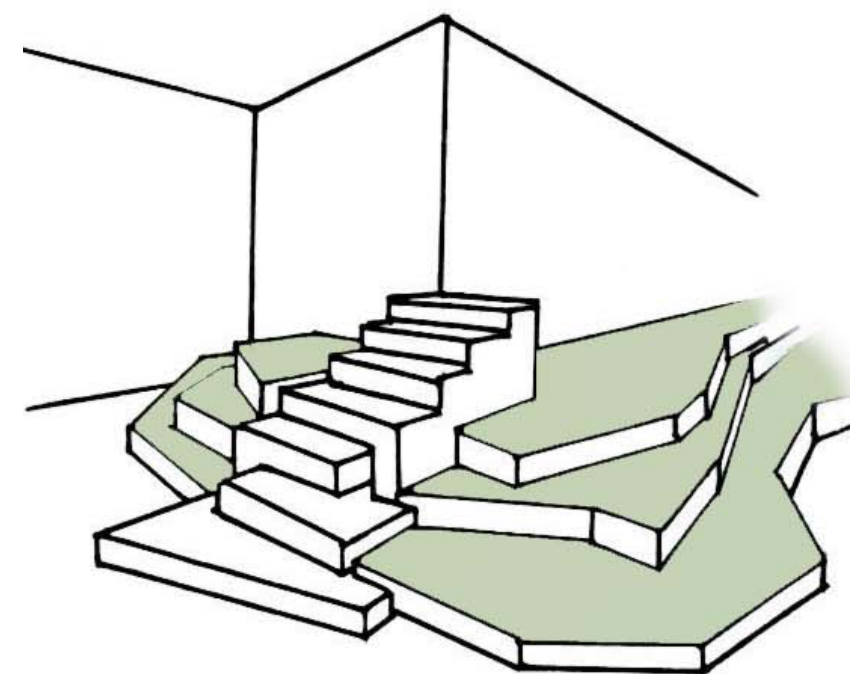
- all spaces stem from the central stair
- the forum and video conference are on the lower level to keep the office spaces together on level three
- the inspiration zone is directly adjacent to the reception space to allow easy access for visitors
- the private enclaves are tucked next to the open office and cafe to provide a quiet, focused place for people to work

concept 1 / additive stair

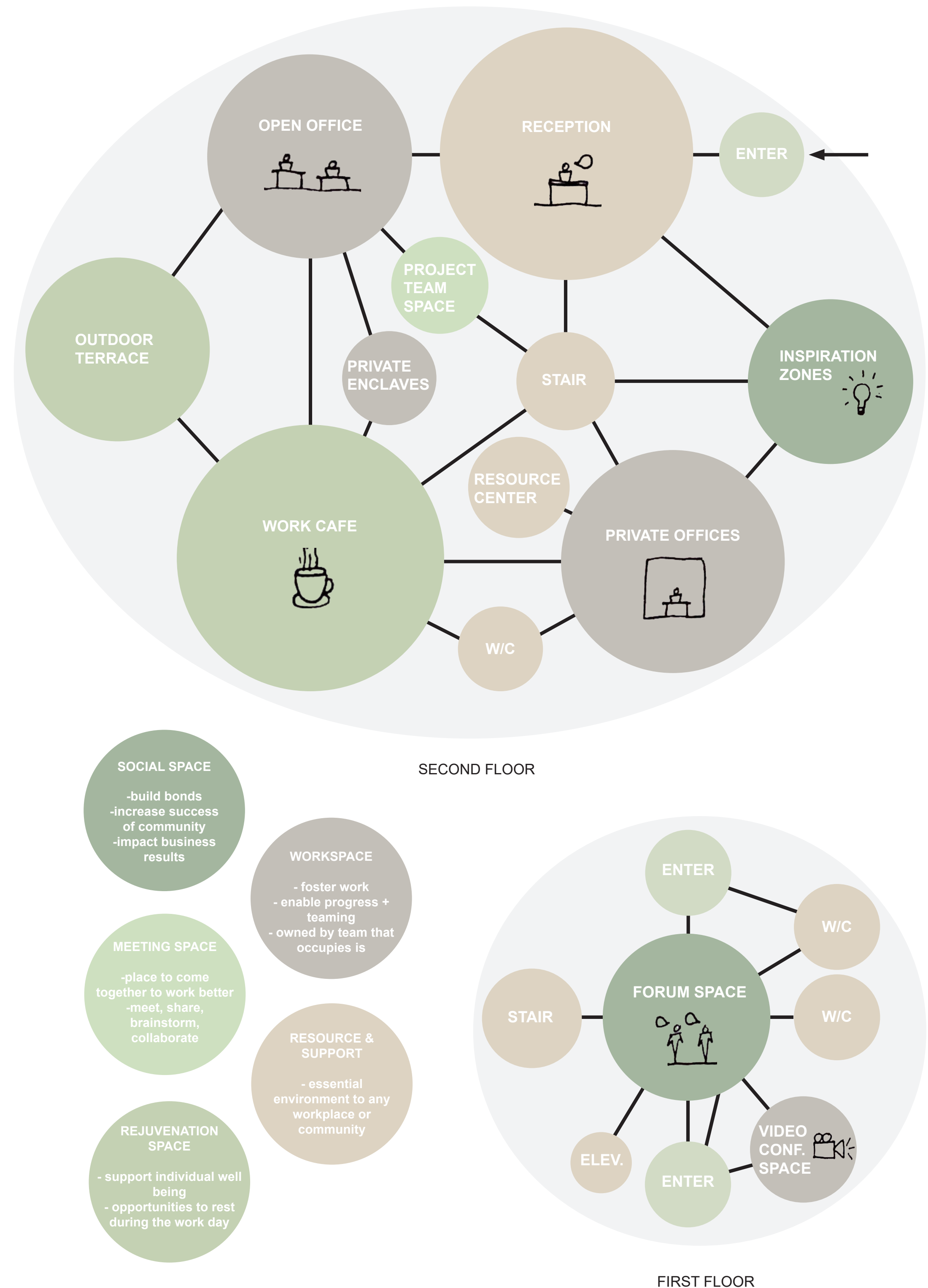


- the platform of the stair houses a portion of the inspiration zone
- a wheelchair lift gives access the platform for those not able to use stairs
- the stair treads are stacked on top of each other to create an interlocking appearance

concept 2 / topography stair



- the tiers surrounding the stair represent the topography of Georgia
- within the topography tiers, adaptive plants to Georgia will grow to create a "green island"
- the stair cuts through the topography to immerse occupants into the green island the tiers create



inspiration images



FIG. 1

SPACES WILL BE SEPARATED BY VARYING CEILING TREATMENTS, SOFFITS, & FLOOR TRANSITIONS



FIG. 2

BUILT IN DISPLAYS WILL HELP STRUCTURE THE INSPIRATION ZONE



FIG. 3

NATURAL MATERIALS SUCH AS WOOD WILL HELP ADD WARMTH TO THE SPACE.

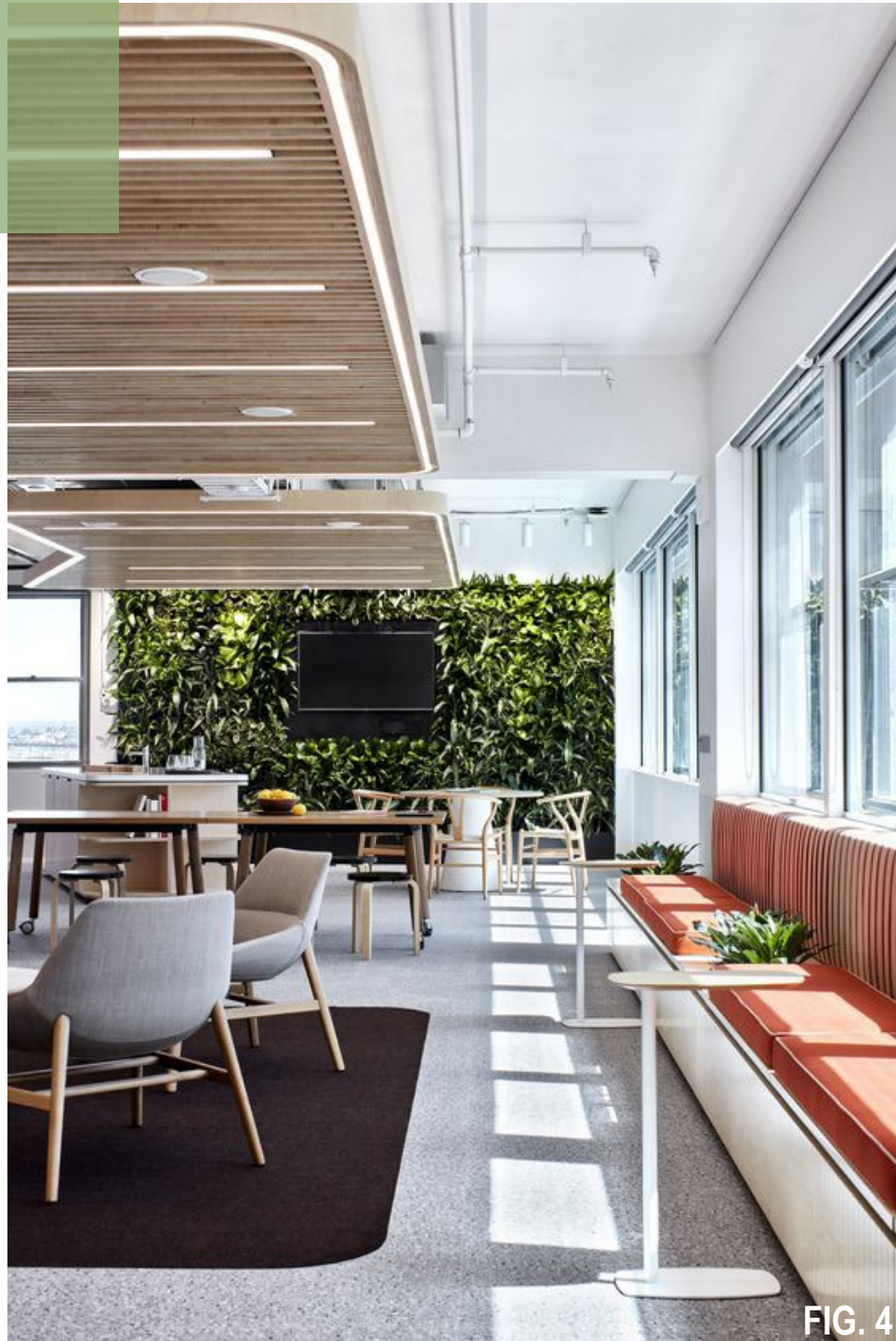


FIG. 4

CONTRAST OF CURVILINEAR AND GEOMETRIC FORMS



FIG. 5



FIG. 6

USE OF CURTAIN WALLS WILL ALLOW NATURAL LIGHT TO FILTER THROUGH ENTIRE SPACE

level one floor plan

- ① informal meeting space
- ② semi formal meeting space
- ③ forum space
- ④ video conference space
- ⑤ ADA compliant bathrooms
- ⑥ not in contract

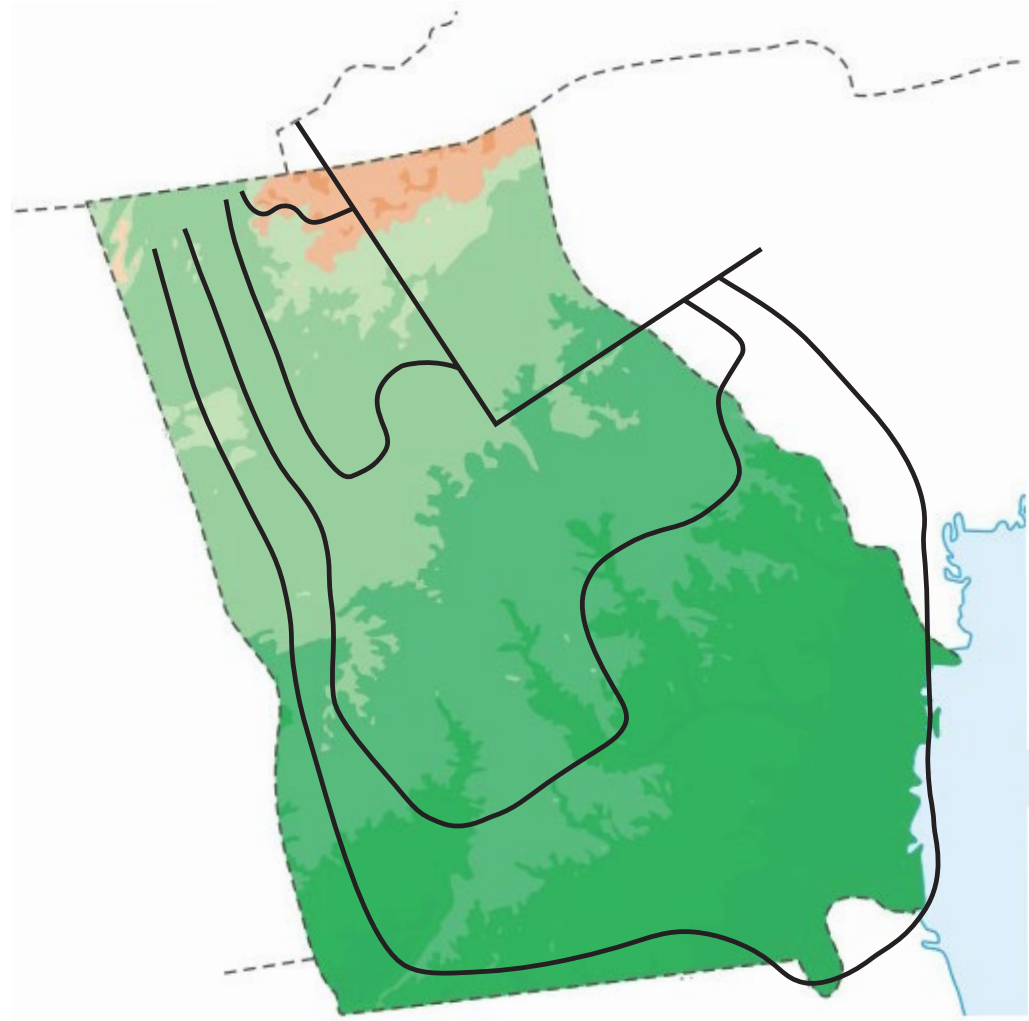
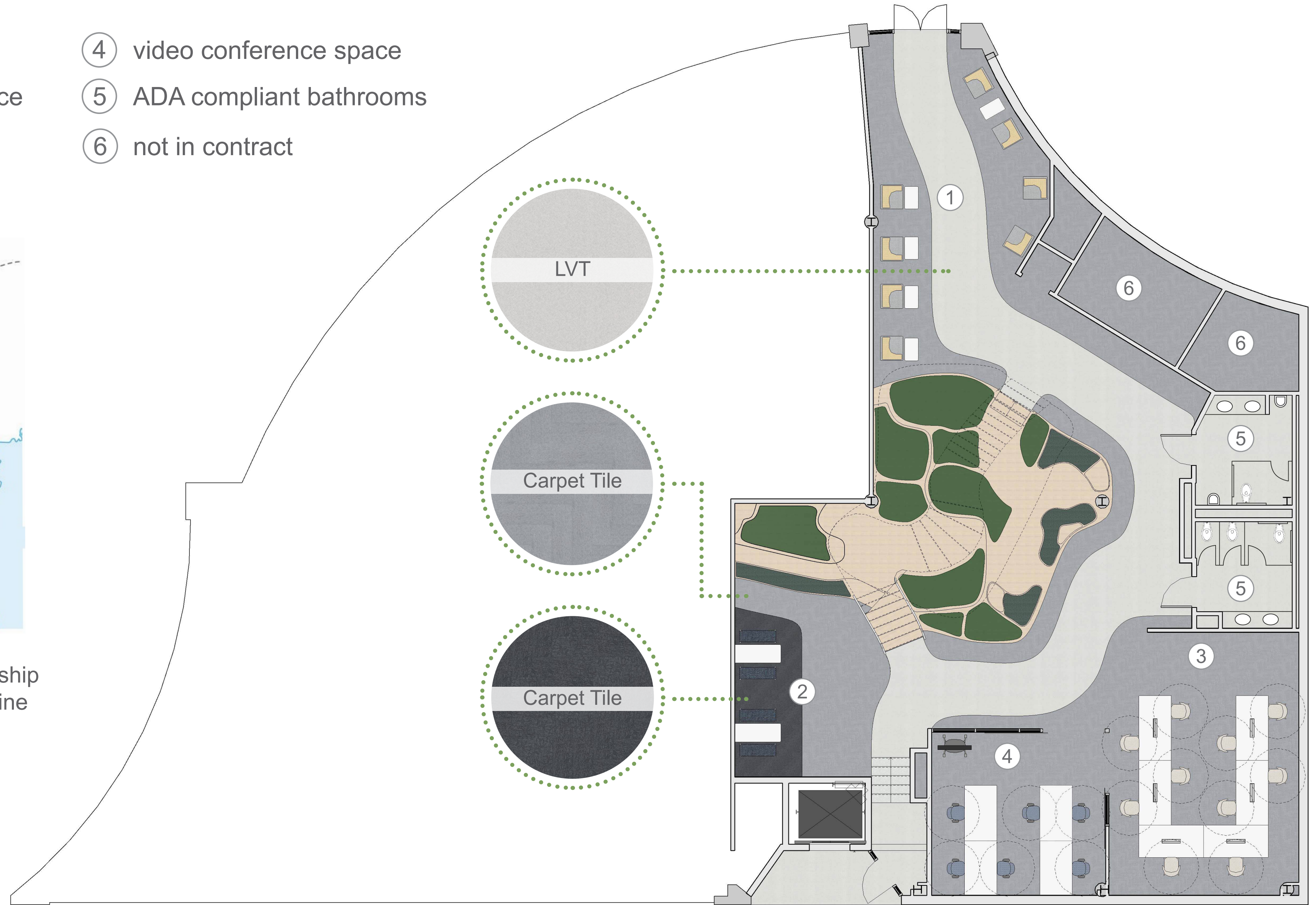
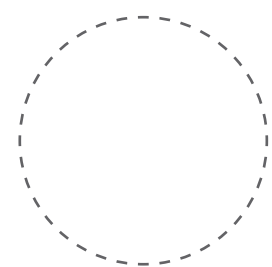


diagram representing the relationship of the topography map to the outline of the stair



level one floor plan / scale 1/8" = 1'0"



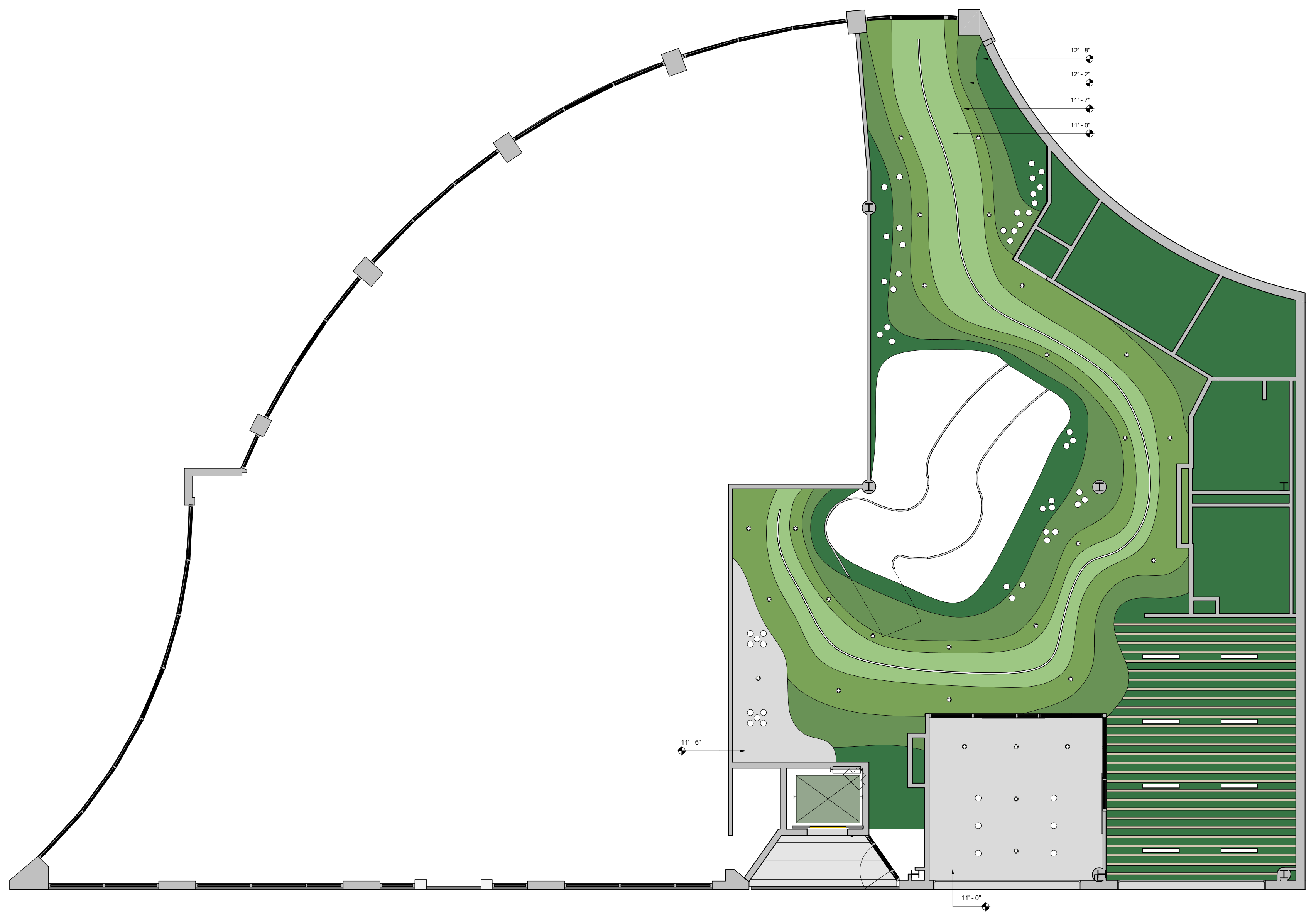
6' circle showing COVID spacing

- the monumental stair is surrounded by a **green island** whose form is inspired by the topography of Georgia to create a stronger representation of the satellite office's location
- the majority of the first level serves as an **extension of the forum** by providing furniture that becomes more formal as occupants move towards the forum and video conference space
- the stair provides an impromptu, short term meeting space on the first tier of the topography where occupants can form a **stronger relationship to nature**

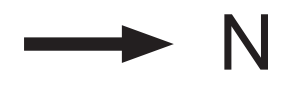
level one reflected ceiling plan

lighting legend

- recessed down-light (round)
- mini hanging pendant
- ceiling mounted linear lamp
- LED tube light

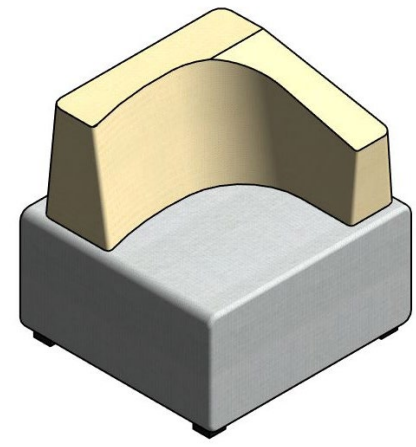
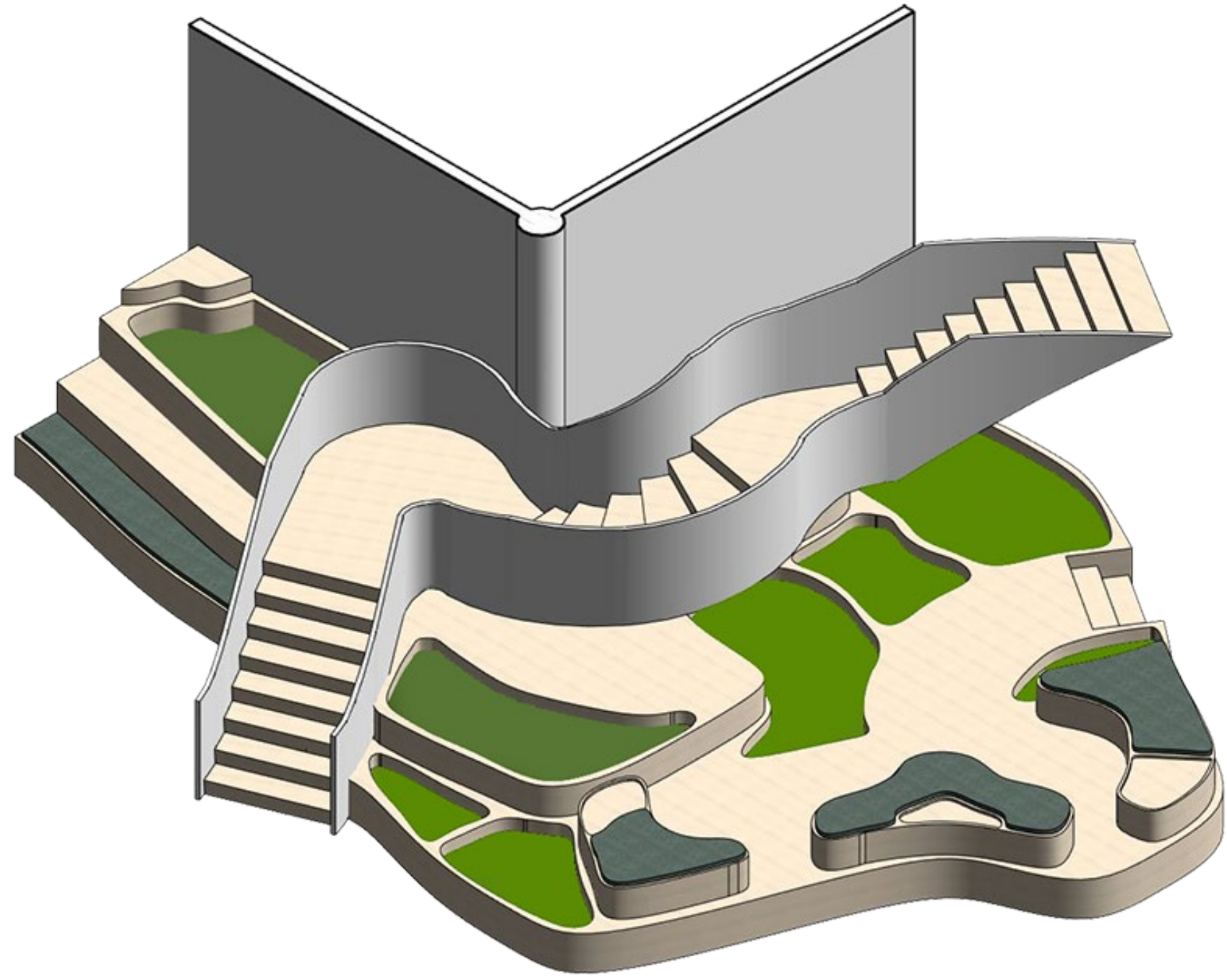


level one ceiling plan / scale 1/8" = 1'0"

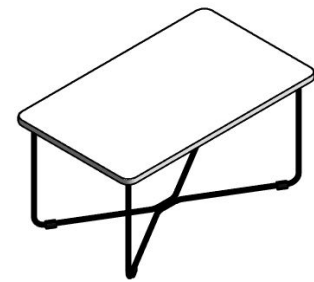


- the ceiling ties in to the topography stair by **mirroring the path of circulation** at different elevations which is further enforced by the different color values of each layer, commonly depicted in topography maps
- the lowest ceiling height of eleven feet helps to make the first level feel more **intimate and creates a relaxing ambiance** through the use of earthy green shades and **diffuse pendant lights** adding a subtle glow to the space
- the horizontal wood slats above the forum space represent a more **quiet, focused space** with lighting that facilitates task work

stair + level one entrance



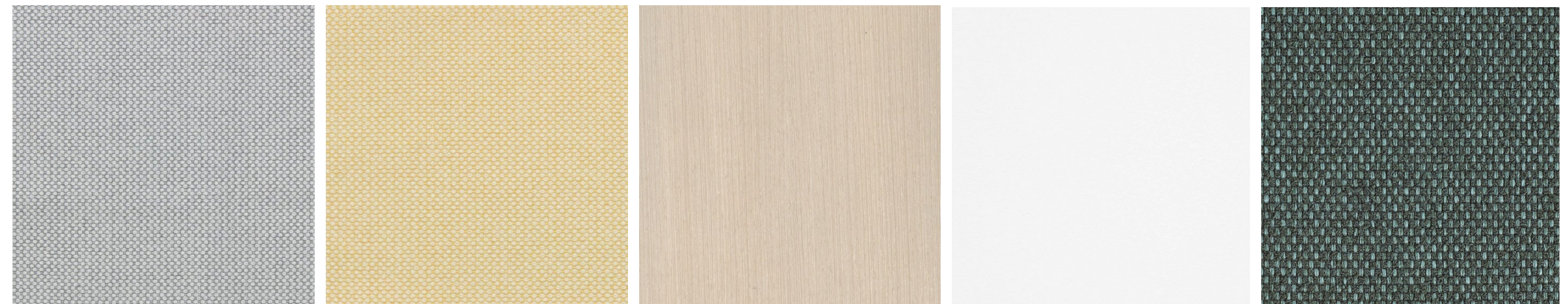
B-free Top Block Seating Cube



B-free Occasional Table



Steelcase Materials:



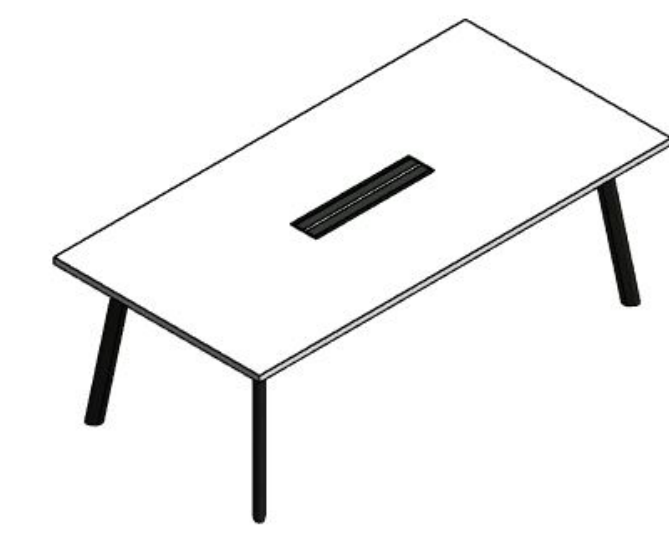


**topography
stair**

forum + video conference space



Coalesse
Capa Chair



Verlay Seated
Height Table



SILQ
Task Chair



B-free Seating
Beam, Small



B-free
Table



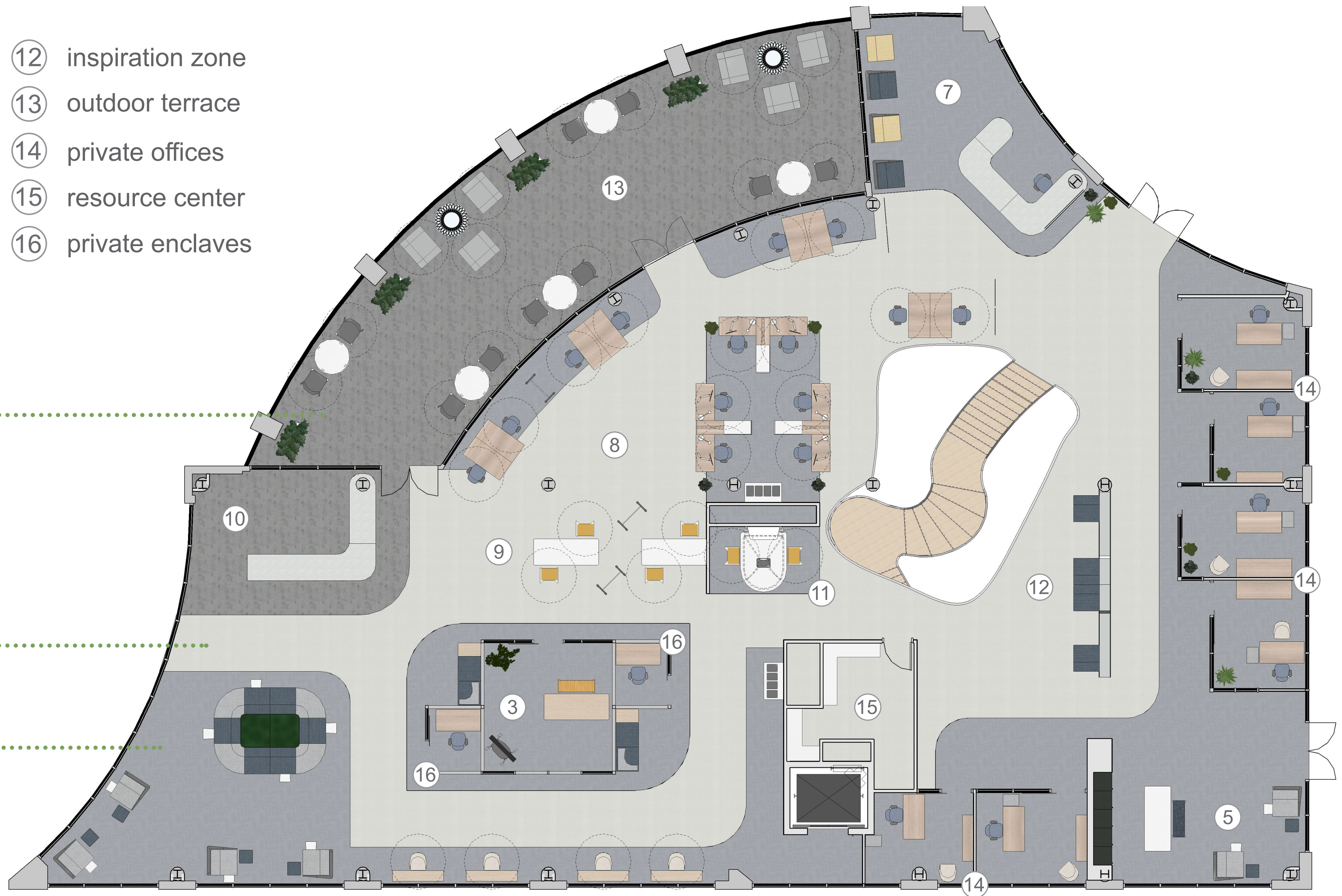
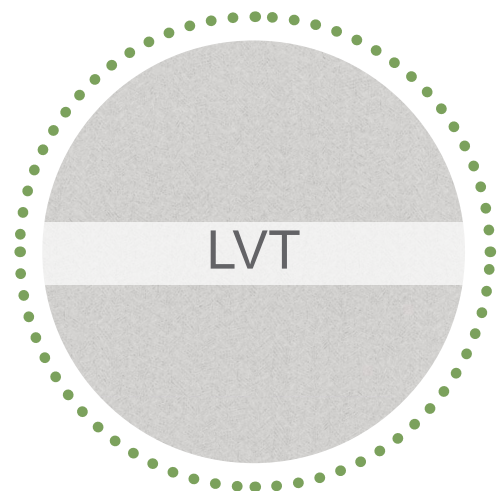
Roam
Mobile Stand

Steelcase Materials:

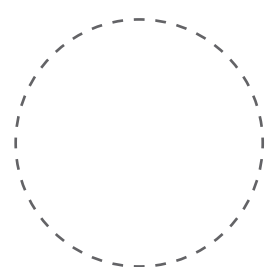


level three floor plan

- ⑦ reception space
- ⑧ open office
- ⑨ project team space
- ⑩ work cafe
- ⑪ in between spaces
- ⑫ inspiration zone
- ⑬ outdoor terrace
- ⑭ private offices
- ⑮ resource center
- ⑯ private enclaves



level three floor plan / scale 1/8" = 1'0"

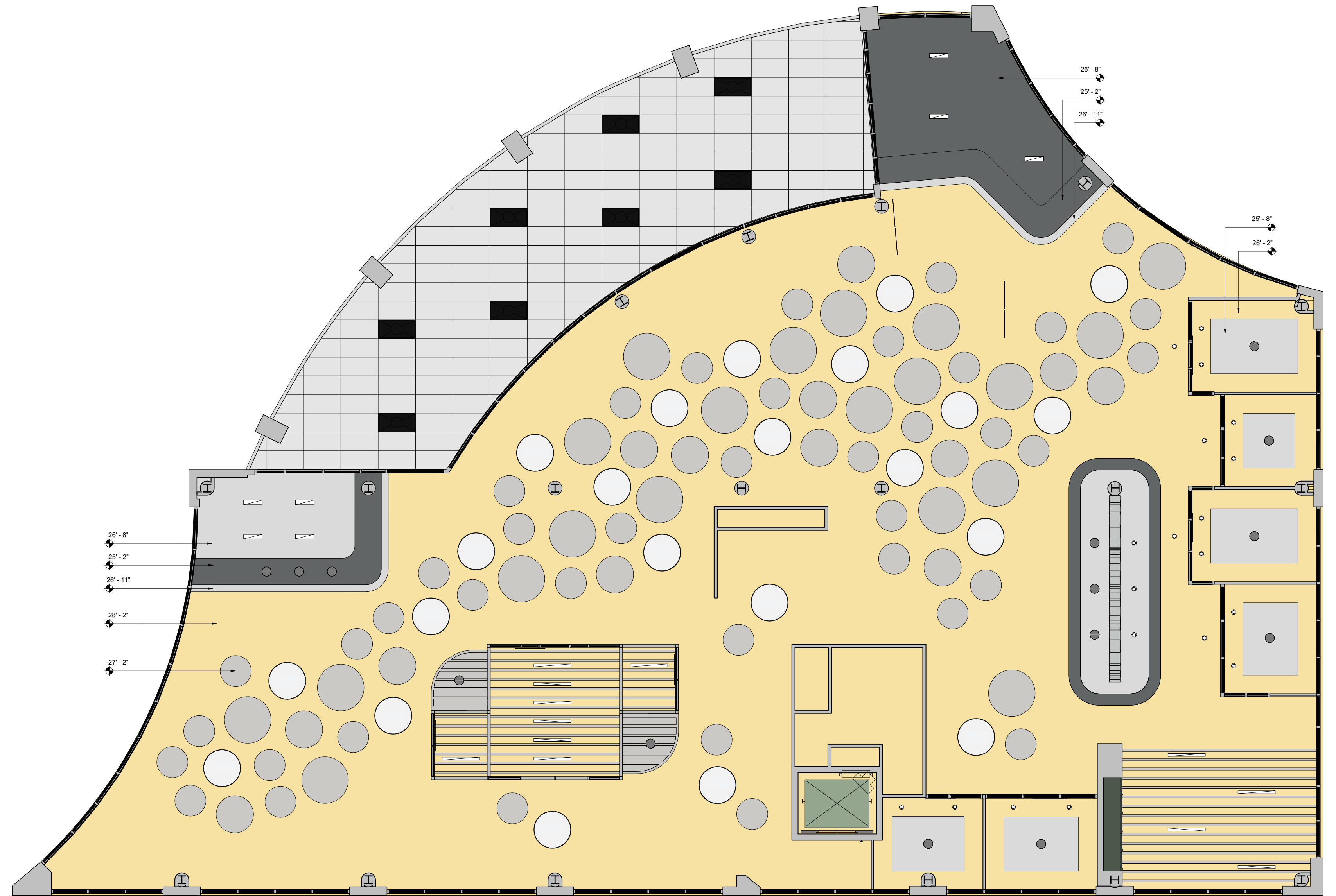
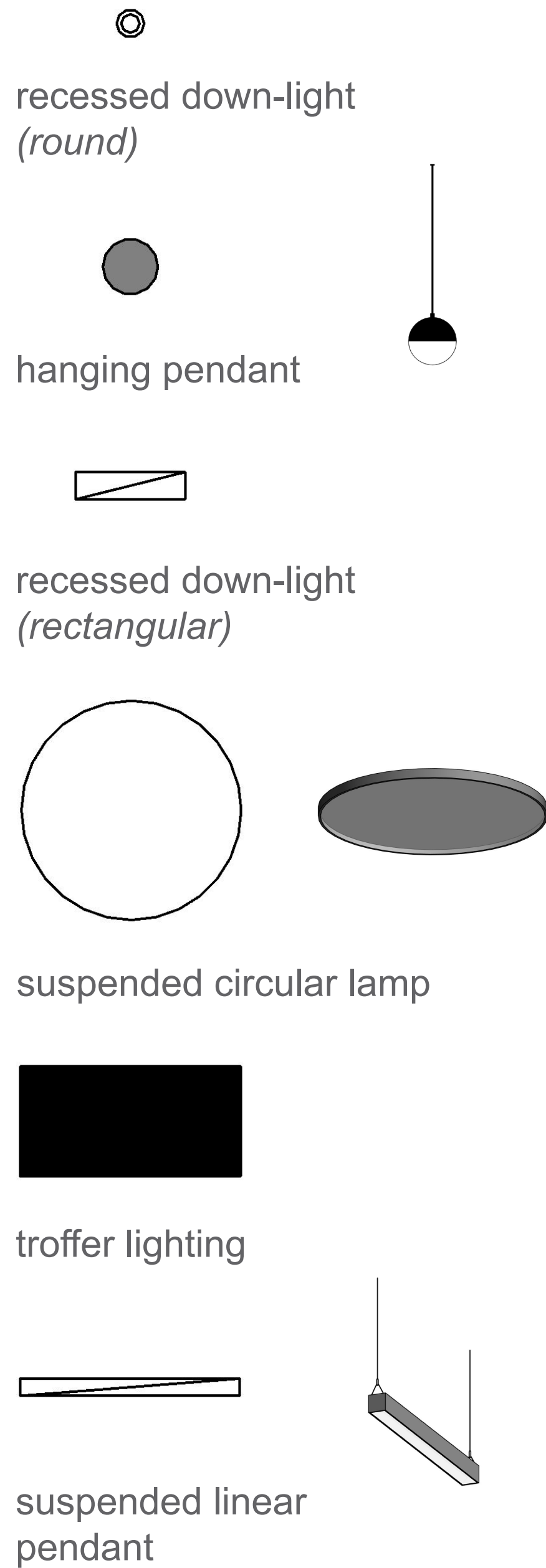


6' circle showing COVID spacing

- polished concrete, LVT, and carpet tile help separate each space while also **guiding circulation** through the office
- each desk and chair placement is conscious of views to **ensure occupant comfort and happiness** when using the space while **promoting productivity**
- the private offices are attached to the exterior wall to provide **direct access to natural light** with a curtain wall facade to allow additional light to filter to the rest of the interior
- the concept of **curvilinear forms contrasting geometric shapes** is consistent both in plan and 3D

level three reflected ceiling plan

lighting legend



level three ceiling plan / scale 1/8" = 1'0"

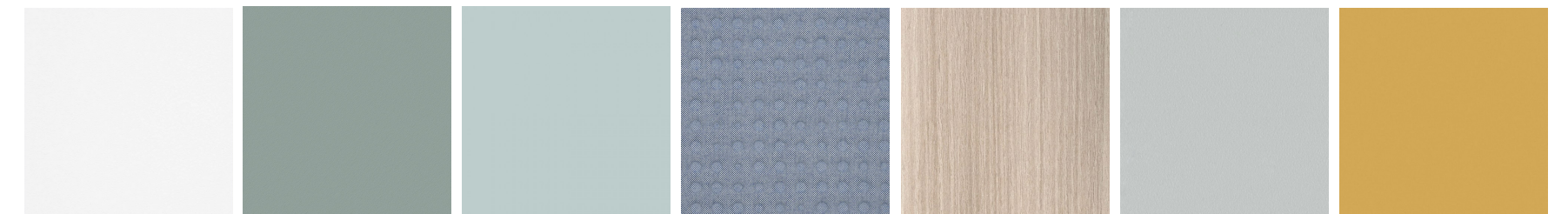


- designing for biophilic design, the yellow ceiling is **representative of the sun** shining down to the entire space
- **dynamic and diffuse** light is implemented throughout the space through the use of diffuse cove lighting and hanging pendants that anchor seating while creating a more intimate space
- the circular acoustic baffles are suspended from the ceiling and help pull people into the space while **mimicking the appearance of clouds**
- horizontal slats covered in acoustic felt signify **spaces for focused work** either with a group or individually

open office



Steelcase Materials:



B-free
Table



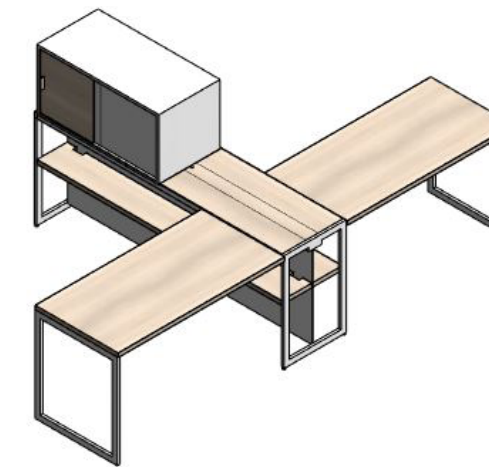
Turnstone
Scoop Stool



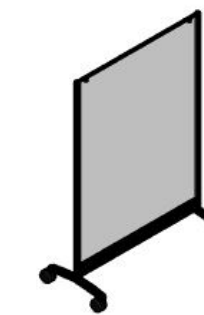
Air Touch Height
Adjustable Desk



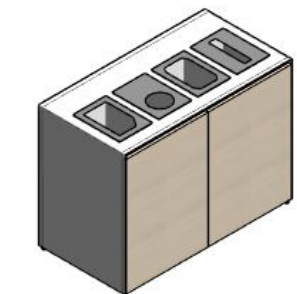
SILQ
Task Chair



Turnstone
Desk System

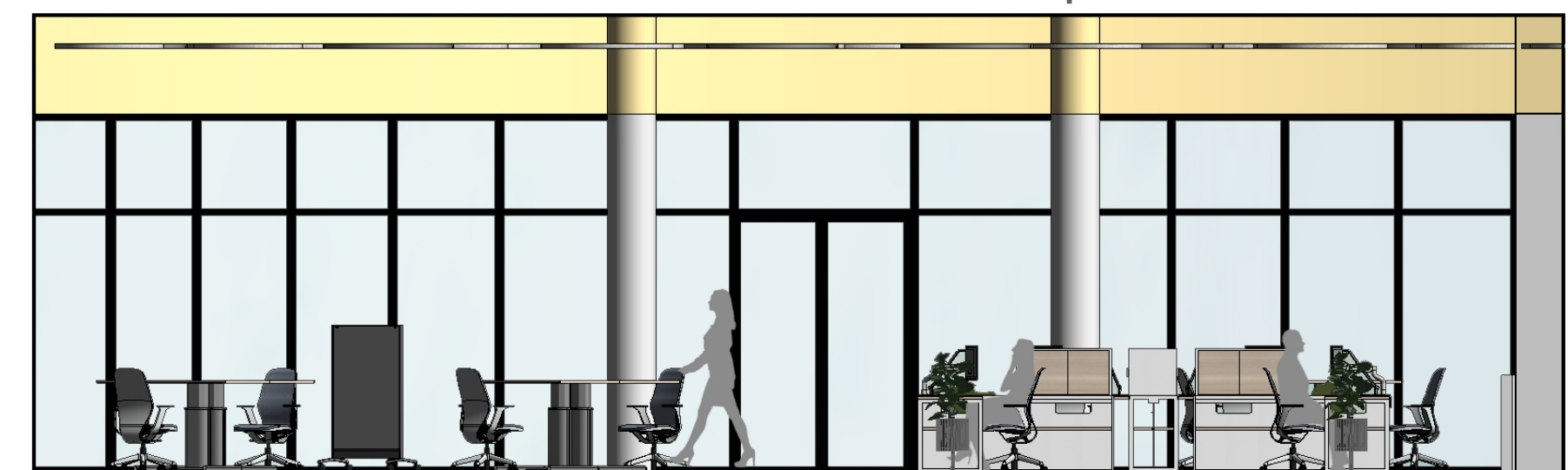


Groupwork
Screen



Victor 2
Freestanding

open office elevation



project team space + enclaves



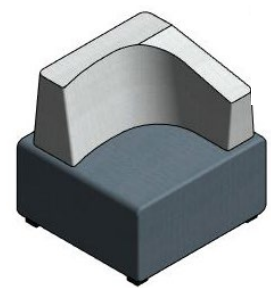
B-free Table



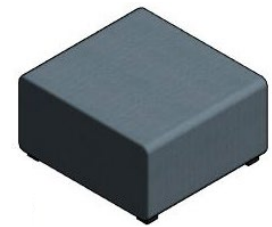
B-free Seating Beam, Small



Roam Mobile Stand



B-free Top Block Seating Cube



B-free Seating Cube



B-free Occasional Table

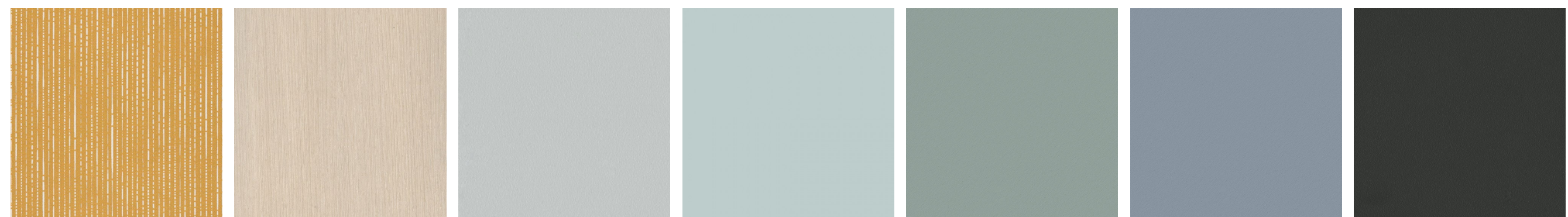


SILQ Task Chair

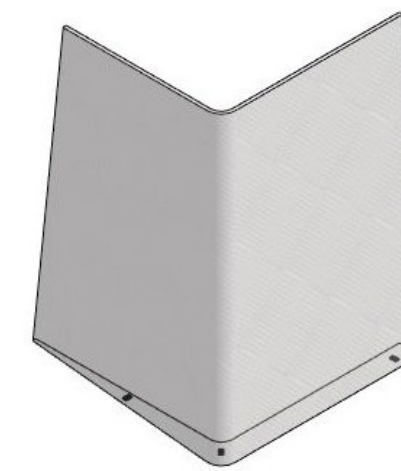
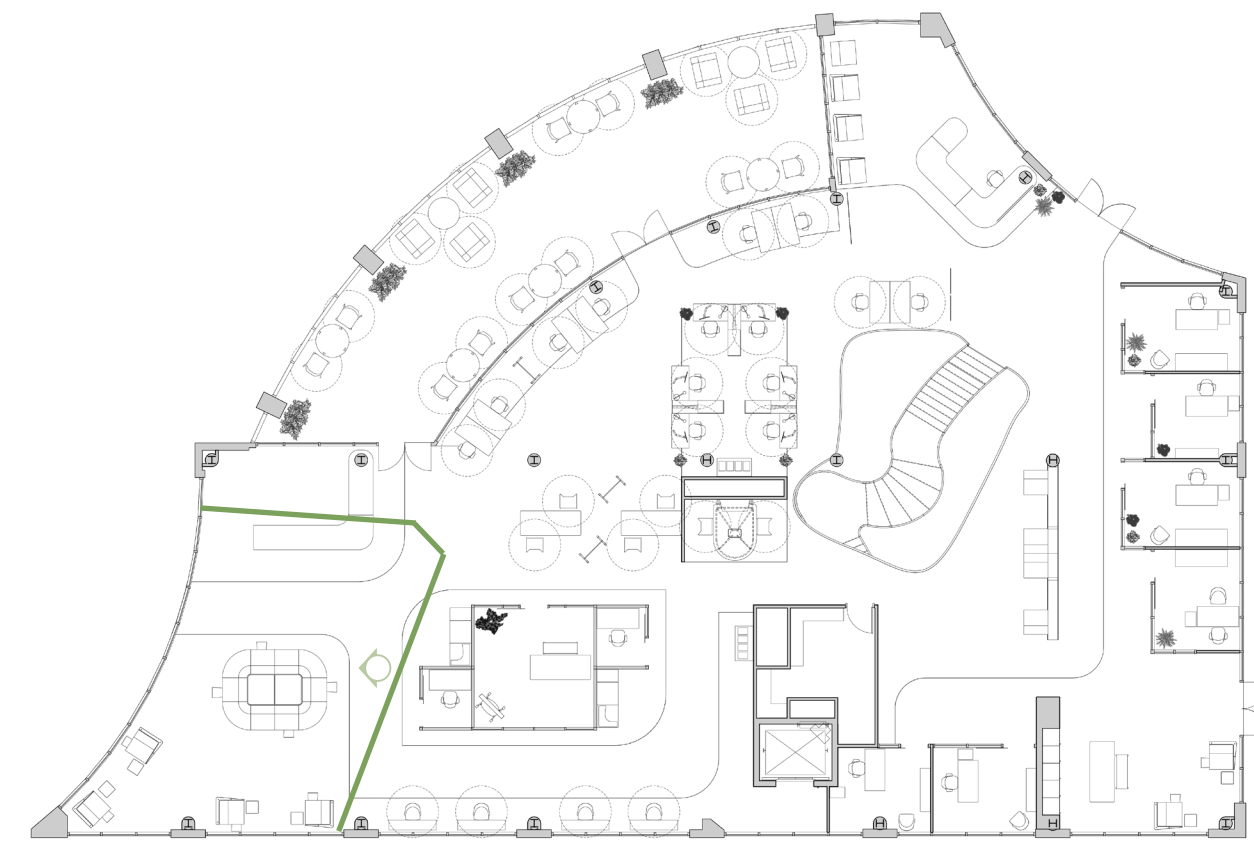


Air Touch Height Adjustable Desk

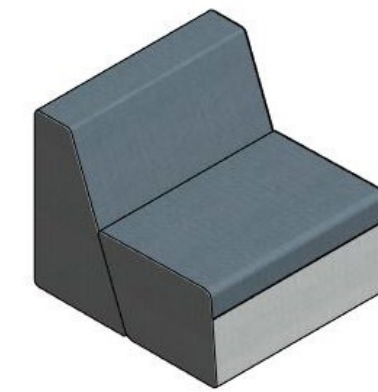
Steelcase Materials:



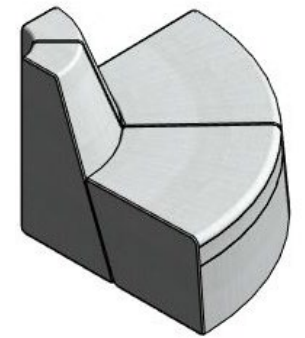
work cafe



Campfire Screen



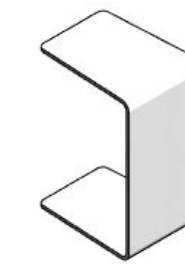
Campfire Half Lounge



Campfire Outside Corner Lounge



B-free Small Cube



Campfire Personal Table

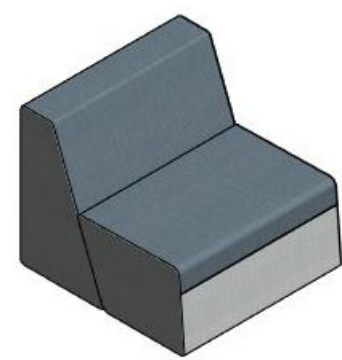
Steelcase Materials:



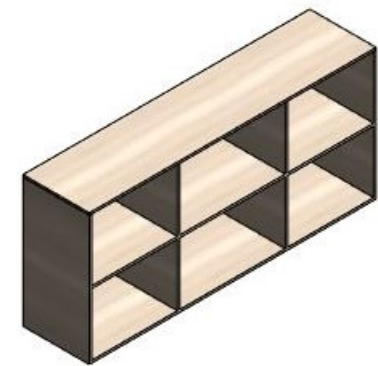
work cafe elevation



inspiration zone + private offices



Campfire Half Lounge



Bivi Storage



West Elm Sterling Conference Chair



SILQ Task Chair



Air Touch Height Adjustable Desk



Effective Elements Lateral File



Effective Elements Mobile File

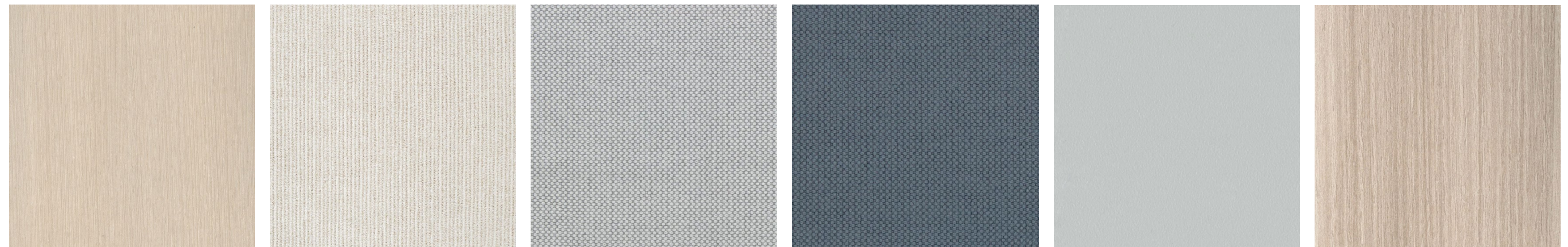


private offices elevation



assigned unassigned assigned assigned

Steelcase Materials:



design summary :

The design of the NEXT satellite office embodies the brand of the company through using biophilic principles such as dynamic and diffuse lighting, considering visual and non-visual connections to nature, and the presence of biomorphic forms. Together, these principles create a space where employees can feel rejuvenated while improving their mental and physical health.

Occupant safety is put first through the practice of post pandemic principles such as six foot spacing between furniture as well as technological resources provided to facilitate collaboration between remote workers. Ergonomic furniture selected from Steelcase

references

figures :

- fig. 1:
Beyond (4) - Office Snapshots in 2020: Office interior design, Cafeteria design, Coworking space design. (2020, October 19). Retrieved from https://www.pinterest.com/pin/327848047877031592/?nic_v2=1a4l0W88A
- fig. 2:
These Are The Coolest Coworking Spaces In New York City in 2020: Workspace design, Coworking space design, Office space design. (n.d.). Retrieved from https://www.pinterest.com/pin/7459155623514252/?nic_v2=1a4l0W88A
- fig. 3:
Boutique Coffee Roaster Coperaco's First Cafe Holds a Modern Tree House: Modern tree house, Coffee shops interior, Cafe interior design. (2020, September 30). Retrieved from https://www.pinterest.com/pin/657947826787783931/?nic_v2=1a4l0W88A
- fig. 4:
Institute for Sustainable Futures for University of Technology Sydney in 2020: Office interior design, Lounge design, Interior design. (2020, October 04). Retrieved from https://www.pinterest.com/pin/310537336810494962/?nic_v2=1a4l0W88A
- fig. 5:
42 Best Ideas For Decorating Your Office At Work in 2020: Office interior design, Work office design, Commercial office design. (2020, July 17). Retrieved from https://www.pinterest.com/pin/798192733943858435/?nic_v2=1a4l0W88A
- fig. 6:
MuseLAB Creates A Bright And Happy Space For Bombay Shirt Company in 2020: Open office design, Private office design, Commercial office design. (2020, October 26). Retrieved from https://www.pinterest.com/pin/75716837474667174/?nic_v2=1a4l0W88A

text :

- Birrel, C., & Gray, T. (2014). Are biophilic - designed site office buildings linked to health benefits and high performing occupants? *International Journal of Environmental Research and Public Health*, 11, 12204-12222. DOI:10.3390/ijerph111212204
- Downton, P., et. al. (2017). "Biophilic design applications: Putting theory and patterns into built environment practice." *The International Conference on Design and Technology*, 2017, 59-65. DOI 10.18502/keg.v2i2.596